



TQadesh

INDUSTRIAL CATALOGUE



ABOUT US

At TQadesh Group OU, we specialize in providing innovative solutions and customized strategies that drive growth and sustainability for companies across all sectors. Our team of experts combines experience and creativity to help our clients face challenges with confidence, turn opportunities into results, and move toward a successful future.



MISSION



Our Mission is to lead the transformation of the global industrial sector by providing innovative and sustainable solutions. We are committed to offering cutting-edge products and services that not only address current challenges but also drive progress towards a cleaner, more efficient and sustainable future for all.

VISION



Our vision is to be global leaders in generating innovative and sustainable solutions aimed at transforming multiple industrial sectors. We strive to be recognized as the preferred partner by our clients, offering products and services that drive efficiency, safety, and long-term success in a constantly changing world.

VALUES

The foundations of our corporate culture:

- Innovation
- Integrity
- Commitment to Quality
- Environmental Responsibility
- Collaboration
- Customer Orientation



OUR PARTNERS



OUR QUALITY CONTROL COMMITMENT

All our products undergo rigorous quality control processes to ensure they meet the highest standards. Certified by globally recognized organizations such as SGS, we guarantee reliability, performance, and compliance with international quality benchmarks.

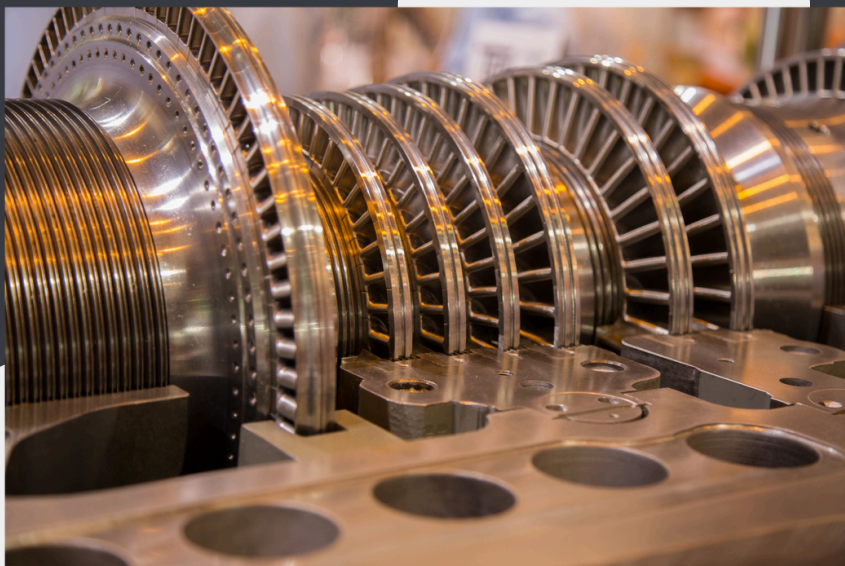




TQadesh

OUR PRODUCTS

OUR PRODUCTS

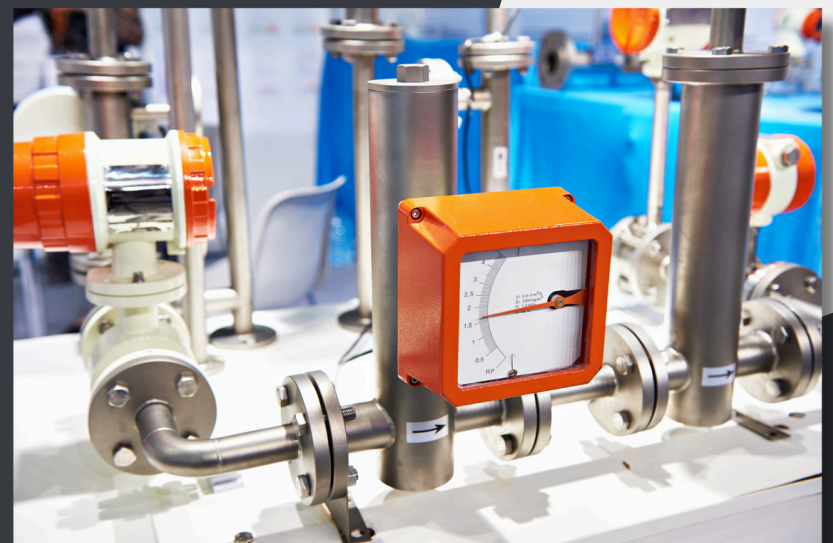


INDUSTRIAL EQUIPMENT AND TOOLS

- Heavy machinery and industrial equipment (pumps, compressors, turbines, filters, etc.)
- Precision tools and measurement equipment for industrial and laboratory use
- Automation and control systems

INDUSTRIAL MATERIALS AND COMPONENTS

- Electronic and electrical components (thermocouples, valves, electronic cards, cables, etc.)
- Advanced construction materials
- Industrial spare parts and consumables



SUPPLY OF CHEMICAL PRODUCTS

- Industrial chemicals
- Specialized chemical products
- Chemicals for industrial processes



OUR PRODUCTS

ENERGY AND ENVIRONMENTAL SYSTEMS



- Renewable energy solutions (solar panels, wind turbines)
- Water treatment solutions
- Waste management and recycling systems
- Equipos de eficiencia energética y reducción de emisiones
- Energy efficiency and emission reduction equipment

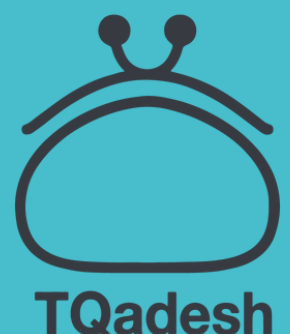
TECHNOLOGY AND DIGITAL SOLUTIONS

- Industrial management software (SCADA, ERP, MES)
- Internet of Things (IoT) solutions for industry
- Industrial security and cybersecurity systems



PROTECTION AND WORKPLACE SAFETY PRODUCTS

- Personal protective equipment (PPE)
- Safety monitoring and control systems (smoke and fire detectors)
- Signage and emergency equipment



THERMOCOUPLES

A thermocouple is a temperature sensor used in industrial and scientific applications for its simplicity, reliability, and broad temperature range. Based on the Seebeck effect, it generates a voltage when two dissimilar metals are exposed to differing temperatures, which can be converted into a temperature reading.

Thermocouples are valued for their durability in extreme conditions, rapid response times, and adaptability to various environments.

They measure temperatures from -200°C to over $2,000^{\circ}\text{C}$, depending on the type (e.g., K, J, T).

Applications include industrial furnaces, engines, food processing, and research.

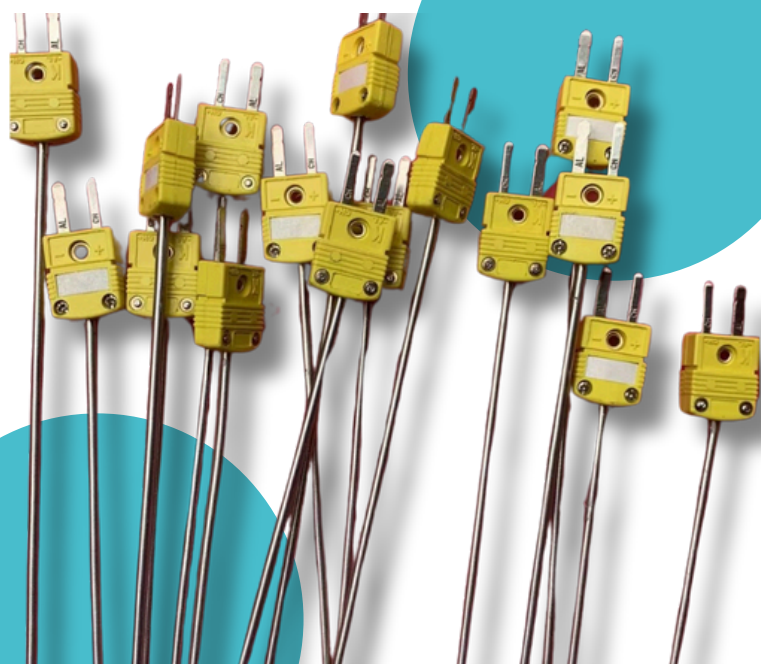
Advantages include affordability, robustness, and suitability for corrosive or high-vibration settings.

Thermocouple Type K



The Type K thermocouple is a widely used temperature sensor in industrial and scientific fields due to its versatility and durability. Made of nickel-chromium and nickel-aluminum alloys, it measures temperature by generating a voltage in response to temperature changes. It is reliable for accurate readings in extreme environments.

OUR PRODUCTS

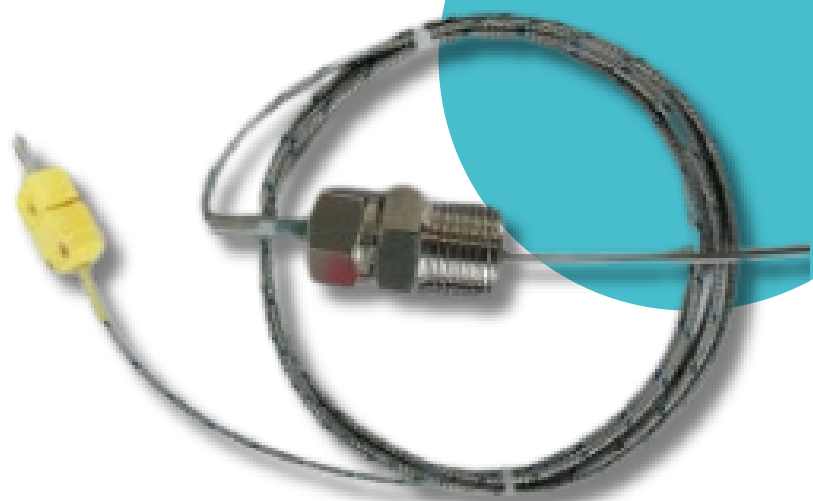


RIGID FLASH-BACK THERMOCOUPLES FOR SIEMENS W501 TURBINES

Their robust construction enables precise temperature monitoring critical for optimizing turbine performance, protecting components, and extending operational lifespan. These thermocouples are essential for reliable energy generation in demanding industrial settings.

FLEXIBLE FLASH-BACK THERMOCOUPLES FOR SIEMENS W501 TURBINES

Their adaptable design allows precise temperature monitoring in challenging areas, optimizing turbine performance and extending component lifespan. These thermocouples are vital for efficient and reliable energy generation in industrial environments.

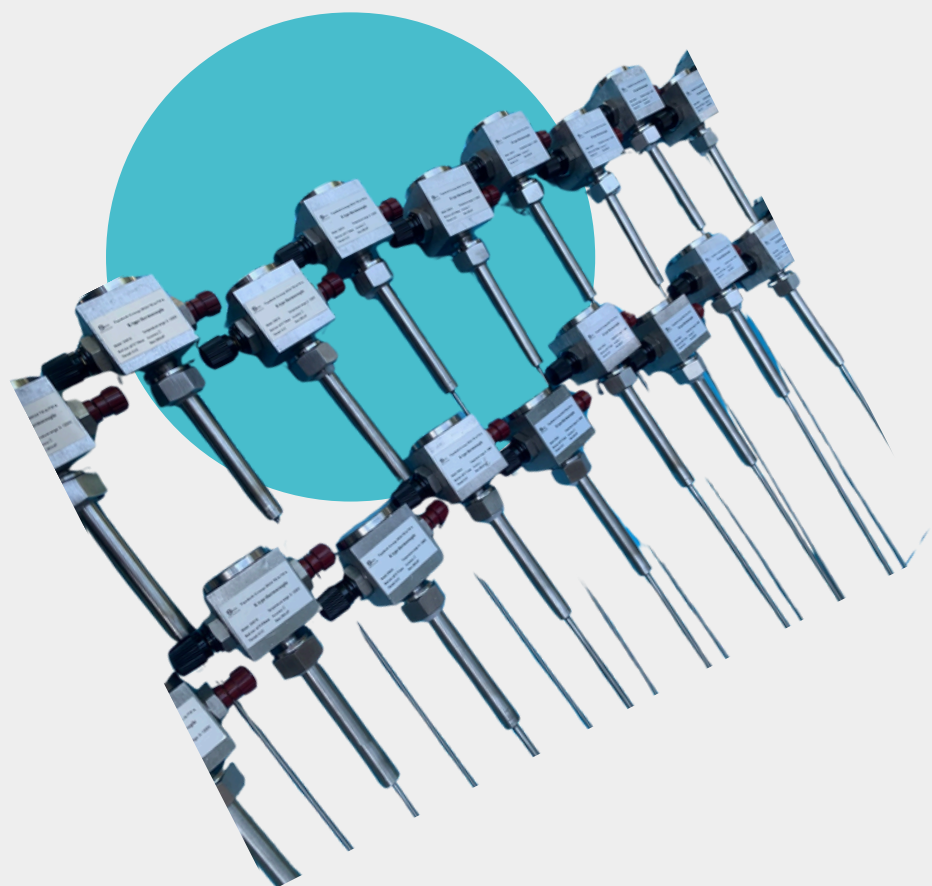


EXHAUST THERMOCOUPLES FOR GE 7EA AND 7FA GAS TURBINES

By ensuring accurate, real-time exhaust temperature readings, they support safe operation, optimize efficiency, and contribute to regulatory compliance in energy production environments.



OUR PRODUCTS



COMPRESSOR THERMOCUPLES FOR GE 7EA AND 7FA GAS TURBINES

Their robust design supports real-time data collection in high-stress environments, helping to enhance turbine performance and extend component life.

BEARING THERMOCUPLES FOR GE 7EA AND 7FA GAS TURBINES

By providing accurate temperature data, they help protect critical components, optimize maintenance schedules, and enhance the turbine's reliability, ensuring long-term performance in demanding energy production environments.



THERMOCUPLES FOR MANUFACTURING PROCESS

They provide precise temperature monitoring to ensure product quality, process efficiency, and equipment safety. Their versatility and durability make them essential for controlling thermal conditions in applications like metalworking, plastics, and food processing.



FILTERS



Filters for air, gas, lubrication, and hydraulic systems are essential for ensuring the performance, reliability, and longevity of critical equipment across industries such as **oil and gas, power generation, food and beverage, and manufacturing.**

In turbines and compressors, these filters protect against contaminants that can cause wear or inefficiencies.

Air filters ensure clean airflow, gas filters purify fuels and process gases, lubrication filters maintain oil quality for smooth operation, and hydraulic filters protect control systems.

By enhancing operational efficiency and minimizing downtime, these filters are **vital for maintaining industrial standards and productivity.**



OUR PRODUCTS

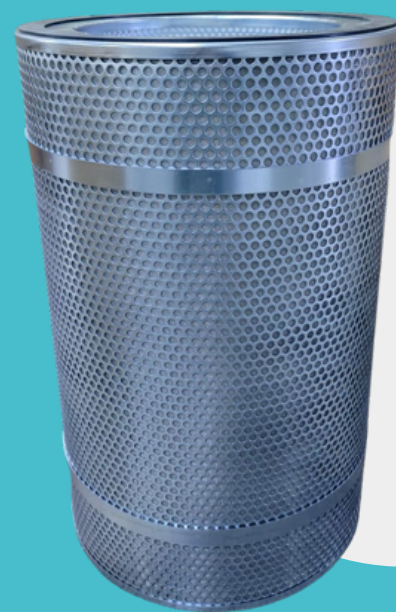


AIR FILTER

Air filters are critical for the safe, efficient, and long-term operation of gas turbines and other industrial systems. They prevent damage from contaminants, ensuring long-term reliability and performance.

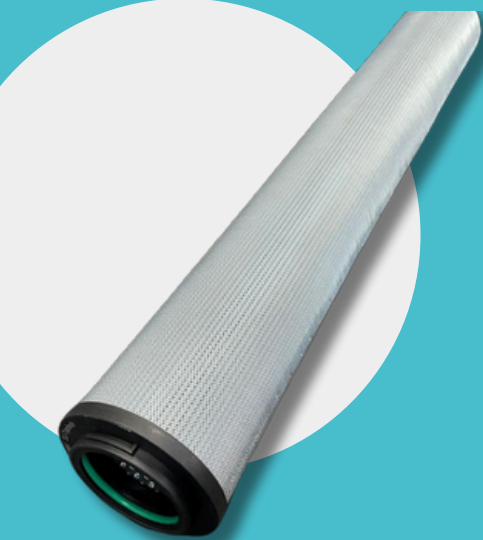
GAS FILTER

GAS FILTERS ARE ESSENTIAL IN GAS TURBINES, REMOVING CONTAMINANTS FROM THE GAS TO ENSURE CLEAN INTAKE AND PROTECT TURBINE PERFORMANCE. THEY HELP MAINTAIN EFFICIENCY, RELIABILITY, AND LONGEVITY IN POWER GENERATION, AVIATION, AND INDUSTRIAL APPLICATIONS.



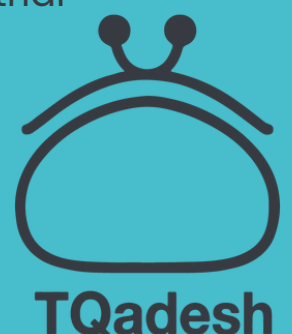
LUBRICATION FILTER

Lubrication filters are indispensable for maintaining the performance, reliability, and longevity of turbines. By ensuring clean and effective lubrication, they safeguard turbine components and enhance operational efficiency across a wide range of applications.



HYDRAULIC FILTER

Hydraulic system filters are essential for removing contaminants from hydraulic fluid, ensuring smooth operation and preventing damage to system components. They enhance the efficiency, reliability, and longevity of hydraulic systems in various industrial applications.



OUR PRODUCTS

SPARK PLUG CABLES FOR GE 7EA AND 7FA GAS TURBINES

Where consistent, high-voltage delivery is essential for safe, efficient operation. Designed to endure the harsh conditions of industrial turbine environments, these cables play a fundamental role in maintaining the reliable performance and overall efficiency of GE turbines in power generation applications.

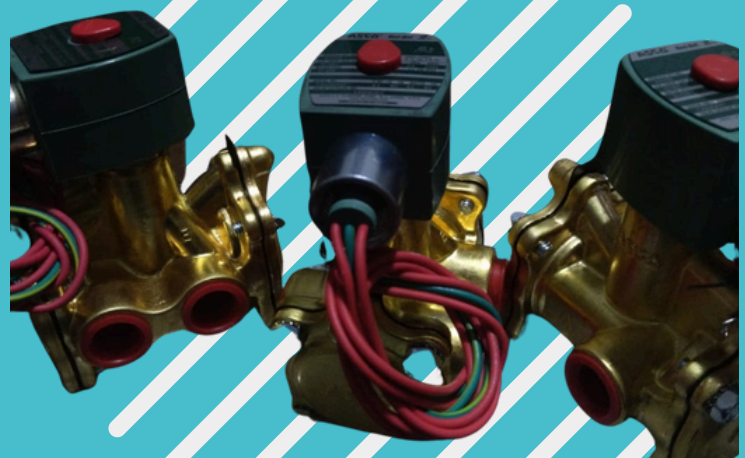
FLAME SENSORS FOR GE TURBINES

These sensors ensure stable combustion, enhance fuel efficiency, and protect the turbine from unsafe operating conditions, making them indispensable for turbine performance in power generation applications



SERVO VALVES AND CONTROL PROCESS VALVES

Servo valves and control process valves are critical components in industrial systems, providing precise control of fluid flow and pressure. They ensure optimal performance, efficiency, and accuracy in automation, hydraulic, and pneumatic applications.



OUR PRODUCTS

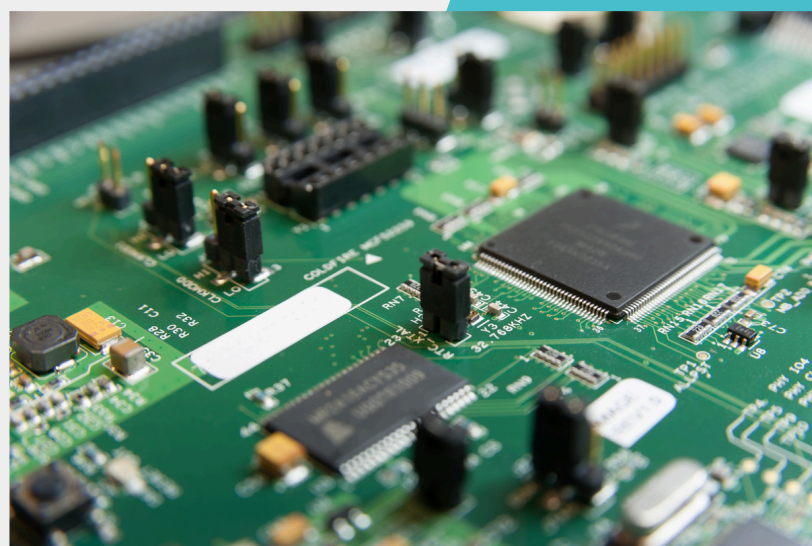
THERMOCOUPLE CONTROL MODULE



Thermocouple control modules are electronic devices designed to monitor and regulate temperature readings from thermocouples. They provide accurate temperature measurement and control for various industrial and automation applications.

ELECTRONIC CARDS

An electronic card is a vital component in electronic systems, responsible for processing and controlling signals to ensure optimal performance. It is used in various applications, including automation, communication, and power management, offering reliable and efficient functionality.



OUR PRODUCTS



COMPRESSION SYSTEMS FOR GAS PROCESSING APPLICATIONS



TQadesh Group is a trusted representative of MINNUO, a company with 32 years of expertise in air compressors and compression systems. Our business focuses on the following key areas:

- Oil-Injected Screw Compressors (Belt and Direct Drive, Fixed and Variable Speed, High Pressure, Atmospheric, and Low Pressure)
- Portable Air Compressors (Diesel and Electric Motor Powered)
- Oil-Free Air Compressors (Dry, Scroll, and Water-Lubricated)
- Industrial Gas Compressors
- Piston Compressors

MINNUO

OUR PRODUCTS

COMPRESSOR WITH AN OIL-FREE SYSTEM

The Oil-Free Compressor System provides efficient, high-performance air compression without the need for lubricants. It ensures clean, contaminant-free air, making it ideal for sensitive applications.



TQadesh

OUR PRODUCTS



400 KW MICRO GAS TURBINE

The 400 kW Micro Gas Turbine offers efficient and compact power generation for a wide range of applications. It provides reliable, high-performance energy with low emissions and reduced maintenance requirements.



TQadesh

OUR PRODUCTS

POWER TRANSFORMER APPLICATIONS



TQadesh

OUR PRODUCTS

REVERSE OSMOSIS SYSTEM, WATER TREATMENT, AND FILTRATION ELEMENTS



The Reverse Osmosis System provides efficient water purification by removing contaminants and impurities. Combined with advanced water treatment and filtration elements, it ensures high-quality, clean water for various applications.

Ultrafiltration System for Water Treatment

ULTRAFILTRATION SYSTEM FOR WATER TREATMENT

The Ultrafiltration System offers advanced water treatment by effectively removing suspended solids, bacteria, and large molecules. It provides a reliable, energy-efficient solution for producing high-quality, clean water.



OUR PRODUCTS



IRRIGATION FITTINGS, ACCESSORIES, AND SYSTEMS

Irrigation fittings, accessories, and systems provide efficient solutions for water distribution in agricultural and landscaping applications. They ensure reliable performance, durability, and optimal water flow management.

SMART IRRIGATION SYSTEM FOR AGRICULTURE

The Smart Irrigation System for agriculture uses advanced technology to optimize water usage, ensuring efficient and sustainable irrigation. It adapts to weather conditions and soil moisture, improving crop yield and reducing water waste.



OUR PRODUCTS

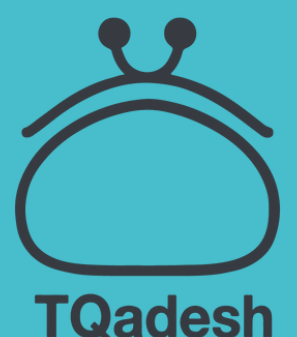


ROASTERS, GRINDERS, AND PACKAGING EQUIPMENT FOR COFFEE AND CACAO BEANS

Our Roasters, Grinders, and Packaging Equipment for Coffee and Cacao Beans (2kg to 60kg/Batch) offer precise, efficient processing with an Artisan Software Controller. This system ensures high-quality production and consistency for artisanal coffee and cacao processing.

AGING CHAMBER FOR PAINT QUALITY CONTROL AND DURABILITY TESTING

The Aging Chamber for paint quality control simulates long-term environmental conditions to assess the durability and performance of coatings. It ensures that paint formulations meet industry standards for color, texture, and resilience over time.



OUR PRODUCTS



POWER INVERTER SYSTEM

The Power Inverter System efficiently converts DC power into AC power, enabling the use of renewable energy sources. It ensures reliable performance for residential, commercial, and industrial energy needs.

PORTABLE BACKUP ENERGY SOLUTION

The Portable Backup Energy Solution provides reliable, on-the-go power for emergencies, outdoor activities, and remote locations. Compact and efficient, it ensures uninterrupted energy supply when needed most.



LITHIUM SOLAR BATTERY LIFEPO4 AND GEL TECHNOLOGIES

Lithium Solar Batteries with LiFePO4 and Gel technologies offer reliable, long-lasting energy storage for solar power systems. These batteries provide high efficiency, durability, and optimal performance in diverse applications.



SOLAR ENERGY SYSTEM



The Solar Energy System harnesses the power of the sun to generate clean, renewable electricity. It offers an environmentally friendly solution for sustainable energy, reducing dependence on traditional power sources.

OUR PRODUCTS

SOLAR SYSTEM ACCESSORIES



Solar System Accessories include essential components such as mounts, cables, connectors, and charge controllers, enhancing the performance and efficiency of solar energy systems. These accessories ensure seamless integration and reliable operation of solar installations.

SOLAR-POWERED PUMP SYSTEM



The Solar-Powered Pump System uses renewable solar energy to efficiently power water pumps for irrigation, livestock, and water supply needs. It offers a sustainable, cost-effective solution for remote and off-grid locations.

CHEMICAL PRODUCTS

SPECIAL EFFECT PIGMENT

Chameleon Pigment
Fluorescent Pigment
Glitter Powder
Laser Paste/Rainbow Paste
Luminous Pigment (Glow in the Dark Pigment)
Optical Brightener (OB, OB-1...Solid and Liquid)
Optical Variable Pigment
Pearlescent Pigment
Photochromic Pigment
Reflective Pigment/Reflective Glass Beads
Thermochromic Pigment

METAL PIGMENT

Aluminum Powder/Paste
Bronze Powder

ORGANIC PIGMENT

Color Paste (water based)
Organic Pigment Series

INORGANIC PIGMENT

Carbon Black
Ceramic Pigment
Chrome Oxide Yellow
(primrose/lemon/medium/deep)
Iron Oxide Red/Yellow/ Black/
Green
Titanium Dioxide Anatase/Rutile
Grade
Ultramarine Blue



CHEMICAL PRODUCTS

ADDITIVES AND SOLVENTS

Antioxidant
Adhesion Promoter
ATBC (Acetyl Tributyl Citrate)
Coupling Agent
Crosslinking Agent
Defoamer
Dispersing Agent
Erucamide
Flame Retardant
Leveling Agent
Micronized Wax/Polyethylene Wax/Polyamide Wax
Methyl Cyclohexane
NEO/PTSA (N-Ethyl o/p-Toluene Sulfonamide)
PU Powder
Silicone Resin
Slip Agent
Thickener
UV Absorber
UV Stabilizer
UV Photoinitiator
Wetting Agent

PRINTING AUXILIARY

Ink Blade
Lab Equipment
Nickel Mesh
PLA Biodegradable Film
PMMA Beads



CHEMICAL PRODUCTS

ADDITIVES AND SOLVENTS

Antioxidant
Adhesion Promoter
ATBC (Acetyl Tributyl Citrate)
Coupling Agent
Crosslinking Agent
Defoamer
Dispersing Agent
Erucamide
Flame Retardant
Leveling Agent
Micronized Wax/Polyethylene Wax/Polyamide Wax
Methyl Cyclohexane
NEO/PTSA (N-Ethyl o/p-Toluene Sulfonamide)
PU Powder
Silicone Resin
Slip Agent
Thickener
UV Absorber
UV Stabilizer
UV Photoinitiator
Wetting Agent

PRINTING AUXILIARY

Ink Blade
Lab Equipment
Nickel Mesh
PLA Biodegradable Film
PMMA Beads





TQadesh

OUR SERVICE

OUR SERVICE



CONSULTING AND TECHNICAL ADVICE

We offer expert consulting and technical advice to address your business's unique challenges. Our experienced team provides innovative solutions in engineering, project management, and process optimization, driving efficiency and sustainable growth.

DESIGN AND ENGINEERING

We offer comprehensive design and engineering services tailored to your project's needs, from concept to execution. Our skilled team delivers innovative, cost-effective solutions in industrial, mechanical, and civil engineering to drive efficiency and success in a dynamic market



PROCUREMENT AND SUPPLY

We provide reliable procurement and supply services, sourcing high-quality products and materials from trusted global suppliers. Our team manages the entire process, ensuring timely, cost-effective delivery and a seamless supply chain that supports your business goals.



OUR SERVICE

AERIAL AND UNDERWATER DRONE INSPECTION

We offer advanced aerial and underwater drone inspection services for efficient assessments of industrial systems, structures, and equipment. Our drones provide high-resolution images and real-time data, enabling early detection of issues like damage and corrosion, while minimizing costs and safety risks.



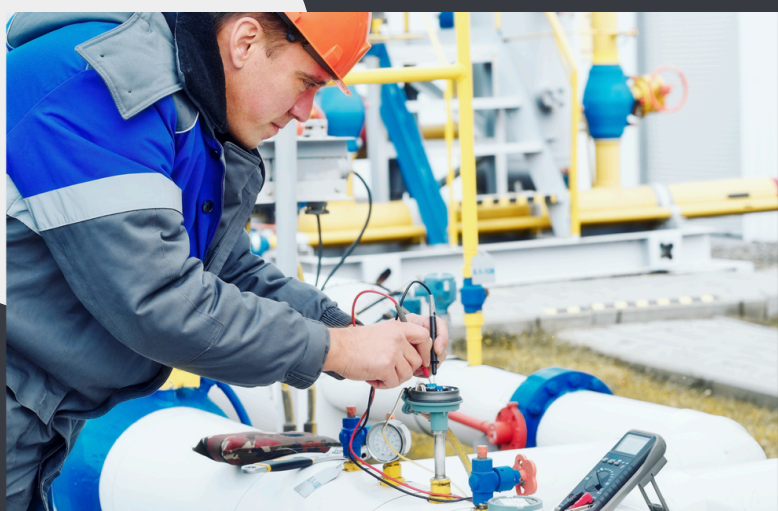
OIL AND WATER ANALYSIS

We provide professional Oil and Water Analysis services to monitor equipment condition and ensure peak performance. Our analysis detects contaminants, moisture, wear metals, and other factors, enabling proactive maintenance to reduce downtime and prevent costly failures.



INSPECTION AND DIAGNOSTIC FOR INSTRUMENTATION

We offer comprehensive field inspection and diagnostic services for instrumentation systems, thermocouples, and valves. Our experienced technicians use advanced tools to detect malfunctions, evaluate performance, and ensure optimal system reliability, reducing downtime and preventing costly repairs.



OUR SERVICE

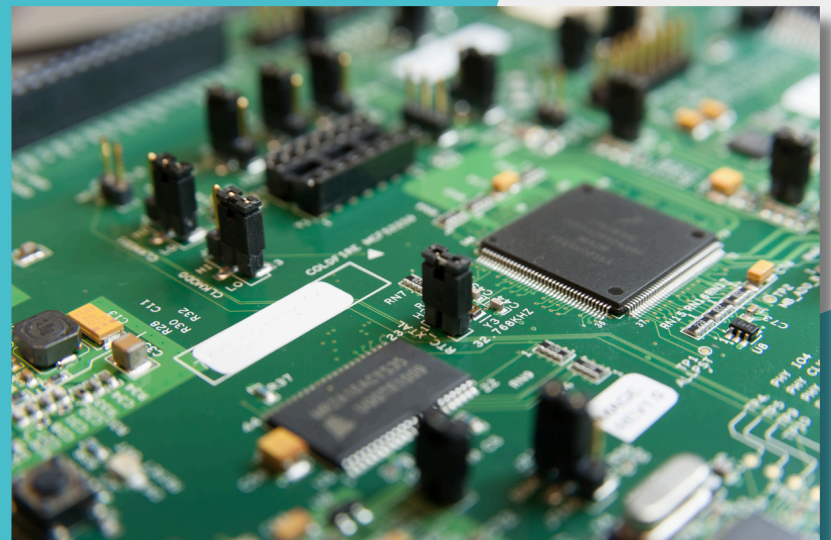
THERMOCOUPLE AND VALVE CALIBRATION AND CERTIFICATION

We provides professional Thermocouple and Valve Calibration and Certification services to ensure accurate measurement and control systems. Our expert technicians use advanced equipment for precise calibration and certification, optimizing equipment performance and ensuring regulatory compliance.



ELECTRONIC CARD PROGRAMMING

We provide expert electronic card programming services to optimize control and automation systems. Our skilled technicians ensure precise programming, enhancing functionality, performance, and reliability for seamless integration across various industrial and commercial applications.



3D PRINTING FOR INDUSTRIAL APPLICATIONS

We provide cutting-edge 3D printing services for industrial applications, creating high-precision prototypes, custom parts, and components. Our advanced technology enables faster development, cost-effective production, and design flexibility, delivering innovative and durable solutions tailored to your needs



OUR SERVICE



QUALITY MANAGEMENT SYSTEM SOLUTIONS

We provide tailored Quality Management System (QMS) solutions to help businesses uphold top standards, ensure compliance, and drive continuous improvement. We leverage advanced technologies to optimize quality control, reduce defects, and enhance operational efficiency.

BUSINESS CREATION AND MANAGEMENT

We provide expert Business Creation and Management services, offering tailored support in company registration, planning, and operations. We help entrepreneurs and organizations streamline processes, ensure compliance, and achieve lasting success.



OCCUPATIONAL AND SPORTS MEDICINE SOLUTIONS

We deliver specialized Occupational and Sports Medicine solutions to enhance employee and athlete health. We focus on prevention, diagnosis, and rehabilitation, creating safer environments and supporting peak performance through expert care and partnerships.



FIELD INSPECTIONS

We successfully conducted an inspection and diagnostic assessment at a power generation plant in Latin America, identifying key issues that led to a 17-MW loss in capacity. Our expert team implemented a comprehensive recovery plan, addressing both mechanical and electrical challenges. Through precise analysis, timely repairs, and optimization strategies, we restored the plant's full output, ensuring enhanced efficiency and reliability.



INSPECTION EQUIPMENTS



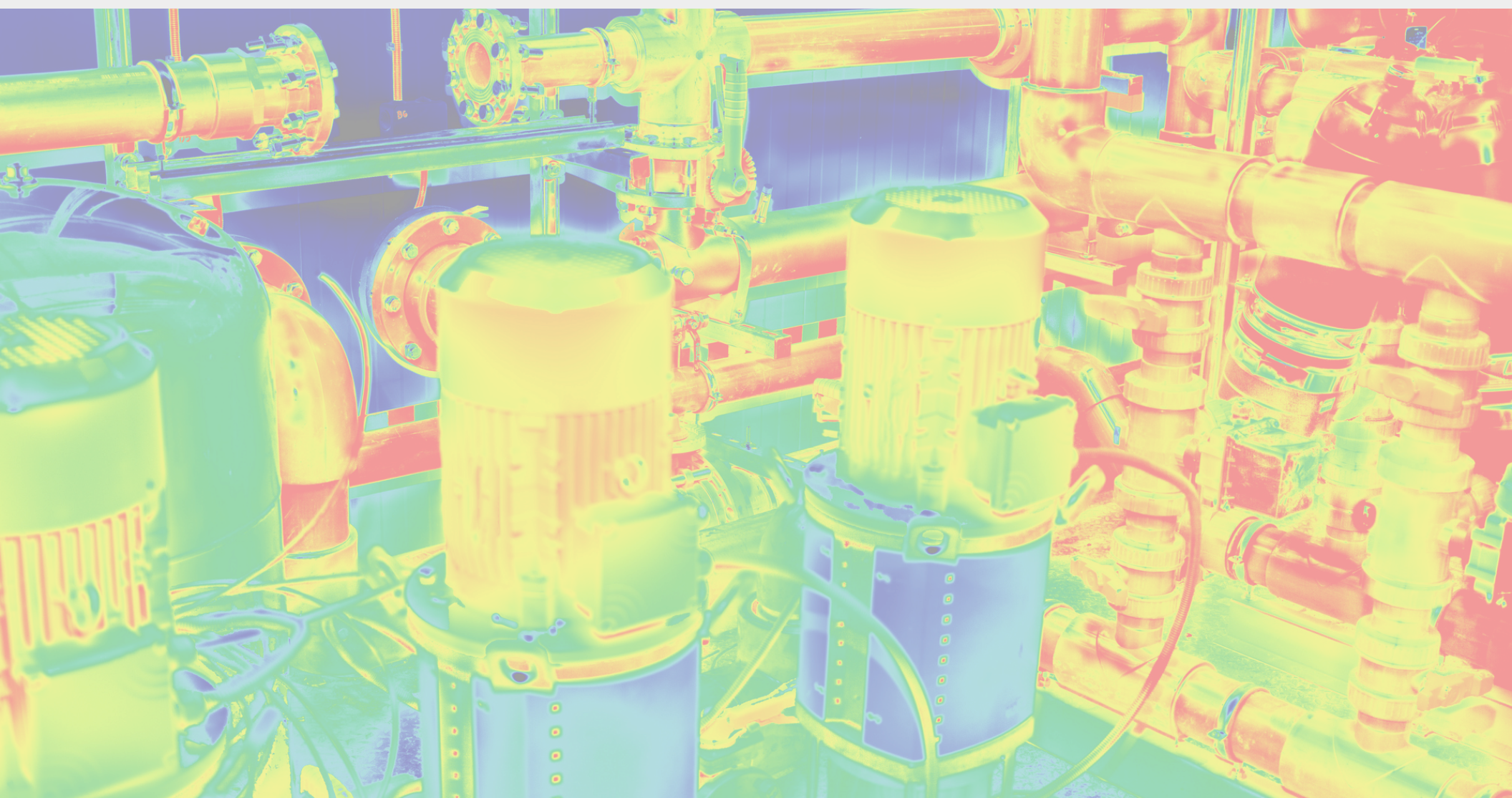
VIDEOSCOPE

A videoscope is a versatile inspection tool equipped with a camera and light source, designed to visually examine hard-to-reach areas in real-time. Widely used in industries like aerospace, automotive, and medicine, it enables precise, non-invasive diagnostics.



THERMAL IMAGING CAMERA

A thermal imaging camera detects and visualizes heat patterns by capturing infrared radiation, enabling the identification of temperature differences. It is widely used in fields like building inspections, medicine, and industrial maintenance for non-contact diagnostics.



INSPECTION EQUIPMENTS



OIL ANALYZER

An oil analyzer is a diagnostic tool used to assess the quality and condition of lubricating oils. It helps detect contaminants, wear particles, and chemical imbalances, ensuring optimal performance and extending the lifespan of machinery and equipment.



INSULATION RESISTANCE TESTER (MEGGER)

A Megger is an electrical testing device used to measure the insulation resistance of electrical systems and components. It helps ensure the safety and integrity of electrical installations by detecting potential faults or degradation in insulation.



VIBRATION ANALYZER

A vibration analyzer is a diagnostic tool used to measure and evaluate vibration levels in machinery, identifying imbalances, misalignments, or faults. It is essential for predictive maintenance, ensuring equipment reliability and minimizing downtime.



INSTRUMENT CALIBRATOR

An instrument calibrator is a device used to test and adjust measurement instruments, ensuring their accuracy and compliance with standards. It is vital in industries requiring precise measurements, such as manufacturing, healthcare, and engineering.



TQadesh

THANK YOU